



Michigan Tech  
Social Sciences

# Barns and Beaches:

## People and Landscapes of Southern Houghton County

May 31–June  
24, 2022  
Track A

### Earn 3 Credits in a 4-Week Immersive Field Course

Advanced undergrads and grad students:

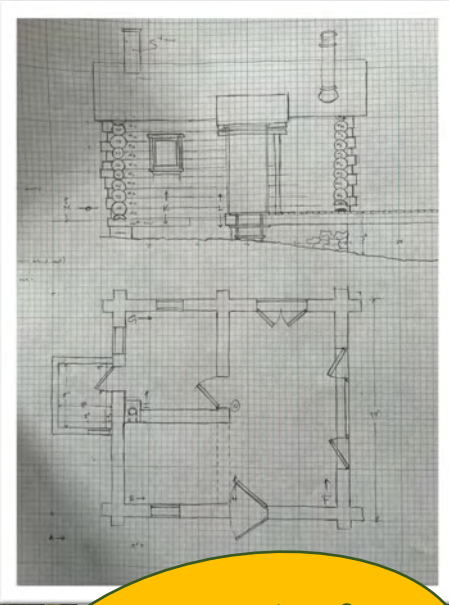
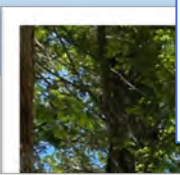
- SS5800 Documentation of Historic Structures or
- SS4990 Special Topics in American History

Students will:

- Study cultural landscapes through multiple disciplines (history, folklore, and more!)
- Do community-engaged field research
- Investigate Finnish-American agriculture, logging history, and vacation landscapes
- Create documentation for Vernacular Architecture Forum 2024 conference

Course experience includes:

- 1 week camping (tents or cabins TBD)
- Historic site documentation
- Digital modeling techniques
- Oral history and ethnography
- *Can help find short-term housing for the on-campus weeks*



Fieldwork on  
the banks of  
Lake Superior!

Dr. Sarah Fayen Scarlett, Michigan Tech  
Dr. Hilary-Joy Virtanen, Finlandia University  
Dr. John Arnold, Keweenaw Nat'l Historical Park  
For more info contact: [sfscarle@mtu.edu](mailto:sfscarle@mtu.edu)  
Registration deadline March 15, 2022

